



Port of Setúbal

A logistic solution

that supports the region's economy.

APSS Administração dos Portos de Setúbal e Sesimbra, SA



- 1. The Port of Setúbal today**
2. Development strategy
3. Main Investments



Location! Location! Location!

- Estuary harbor with excellent natural conditions of shelter
- 30 minutes from Lisbon and 5 hours from Madrid
- At the intersection of the main Atlantic routes

Port of Setúbal: 2017 in numbers

- Total Traffic: 7 million tons / year
- 60% export cargo
- 152 thousand TEU / year
- 224 thousand vehicles /year
- 99% Ro-Ro national mkt share (new vehicles)
- 1.575 vessels / year



Major infrastructures

11 specialized terminals



Port of Setúbal: General Cargo Terminal

- quay length: 864 m, 1 ro-ro ramp
- surface area: 10 ha
- storage: 2 thousand m²
- depth: -9,5m and -10,5m (ZH)
- Concessionaire : TERSADO

wood
irons
fruits
bagged cement
vehicles and machines
marbles



Port of Setúbal: Containers Terminal

- quay length: 725m
- surface area: 20 ha
- depth: -12m (ZH)
- Capacity: 250 mil TEU
- Concessionaire: SADOPT

containers
metallurgical products



Port of Setúbal: Ro-Ro Terminal

- quay length: 365m
- surface area: 20 ha
- depth: -12 m (ZH)

**vehicles
machines**



Port of Setúbal: Terminal Sapec

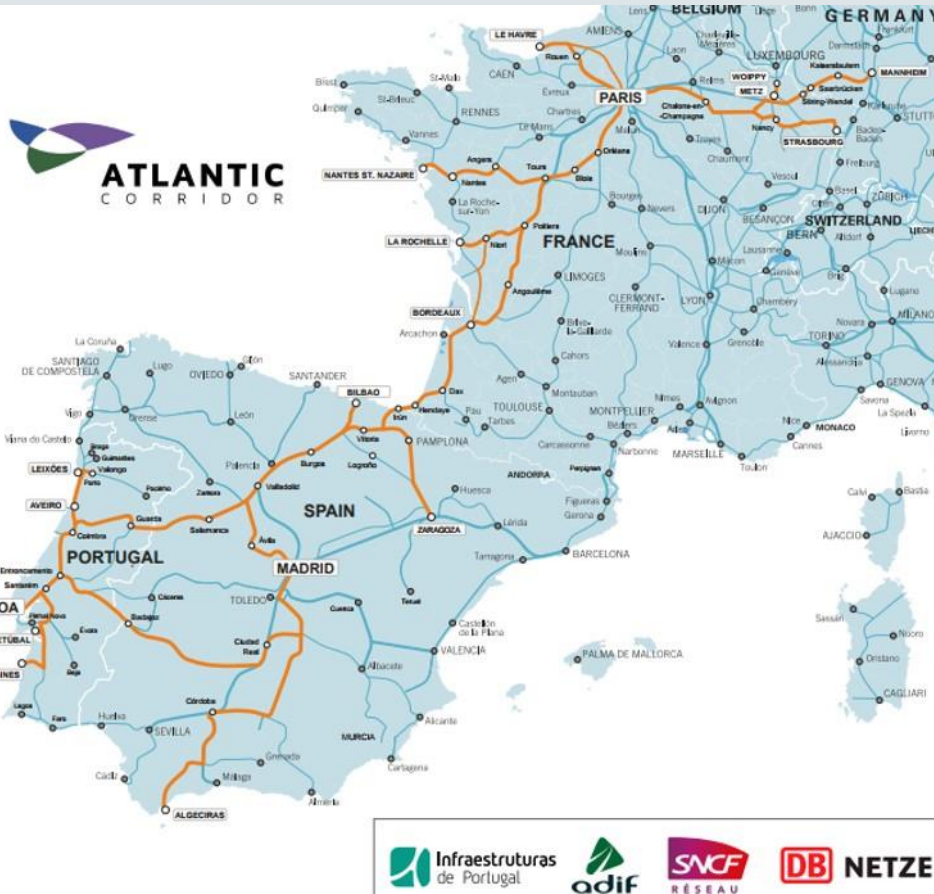
- quay length: 112m
- surface area: 2,5 ha
- Depth: -10,5m -9,5m (ZH)

Acids, Molasses

**Fertilizers , sulfates,
cement, rice, sugar ...**



Port of Setúbal: land access

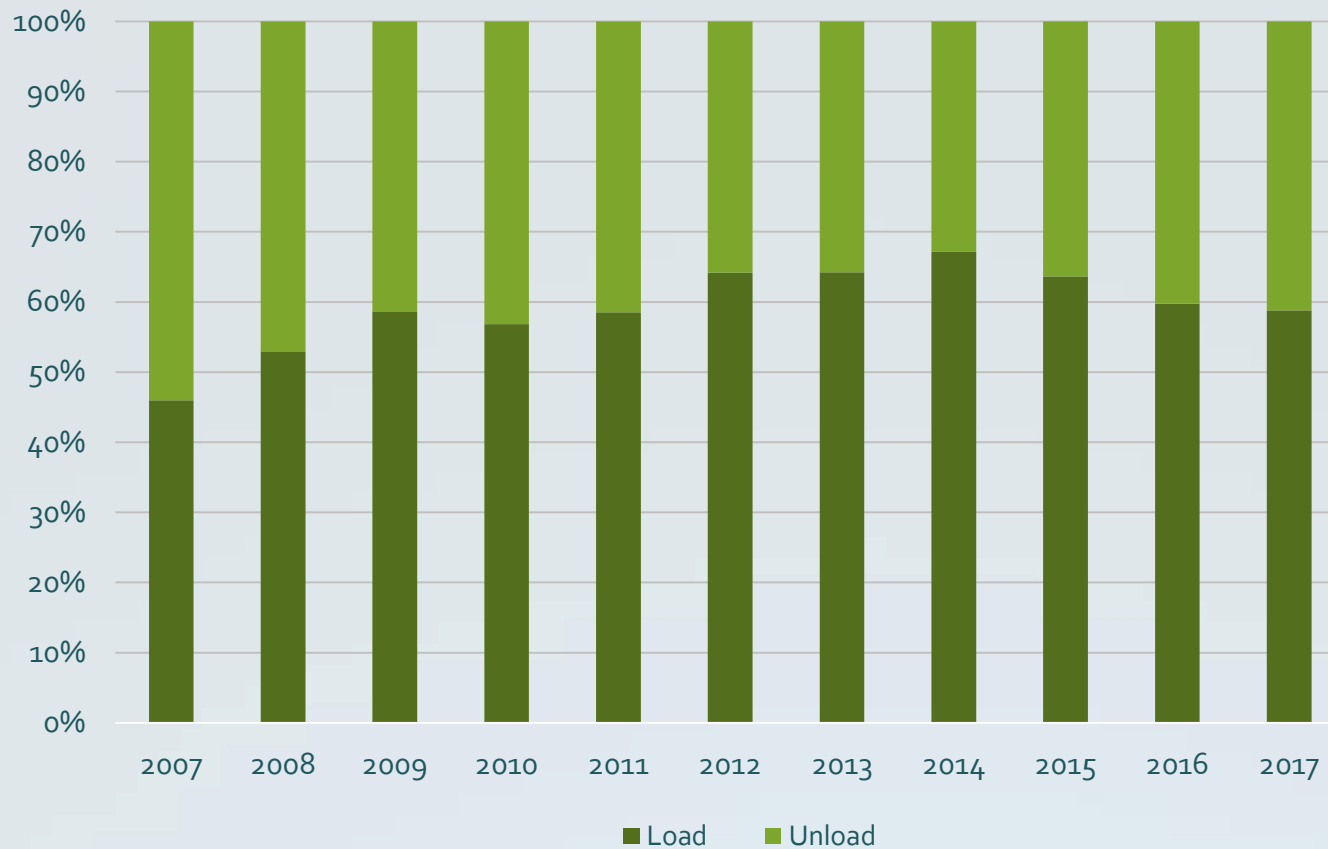


Integrated in the Atlantic Corridor.

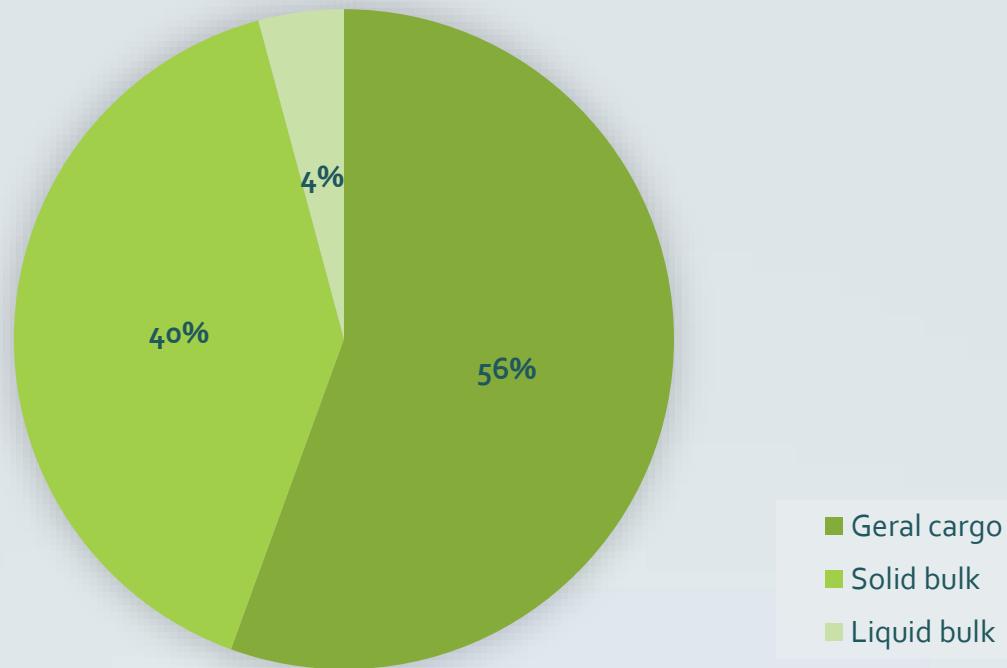
- Direct access from the terminals to the motorways and TEN-T;
- Terminals with rail links;
- Road and rail access outside the city.



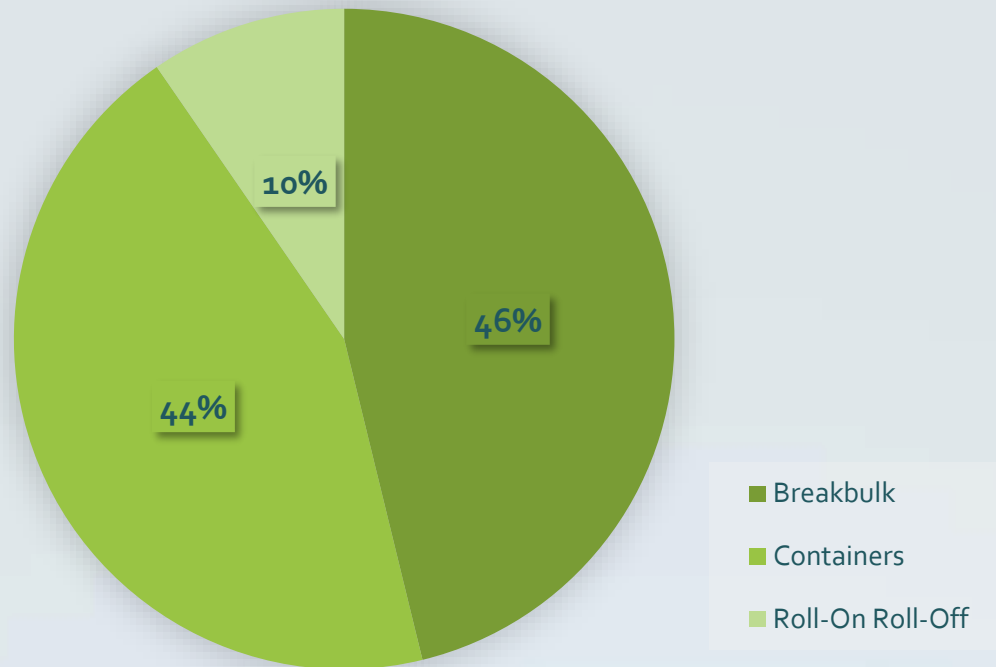
Export vs Import

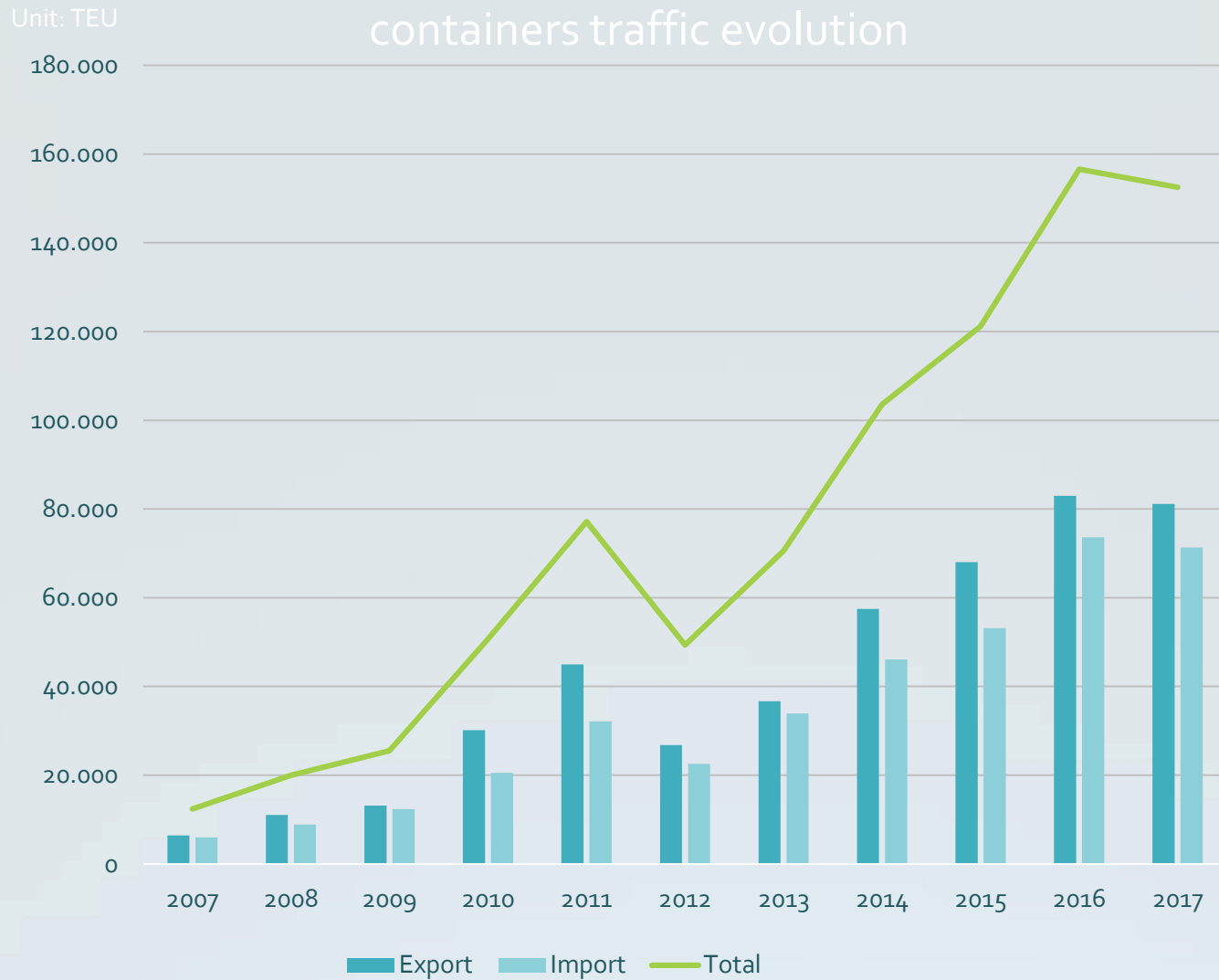


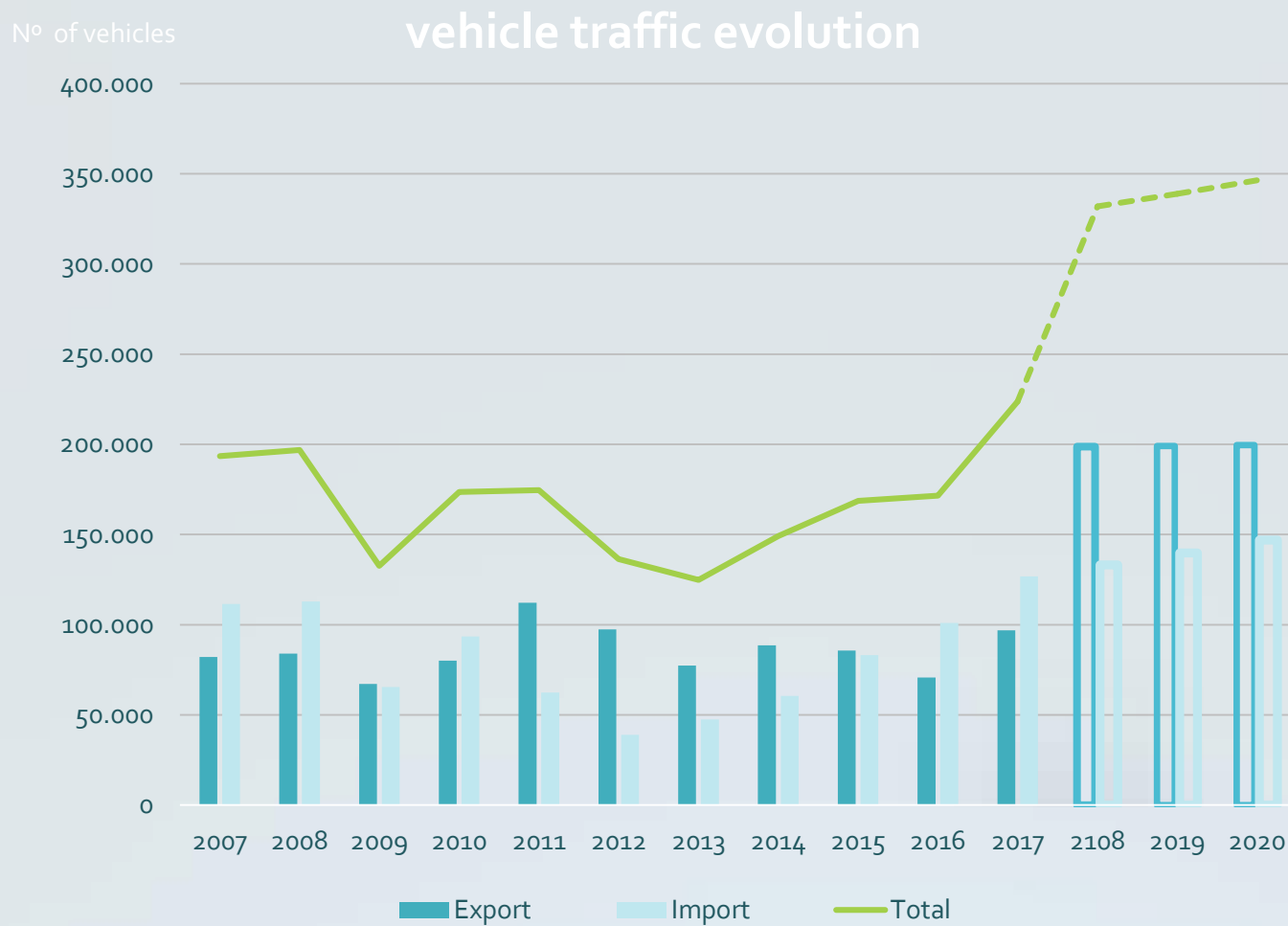
Cargo throughput by type of cargo, 2017



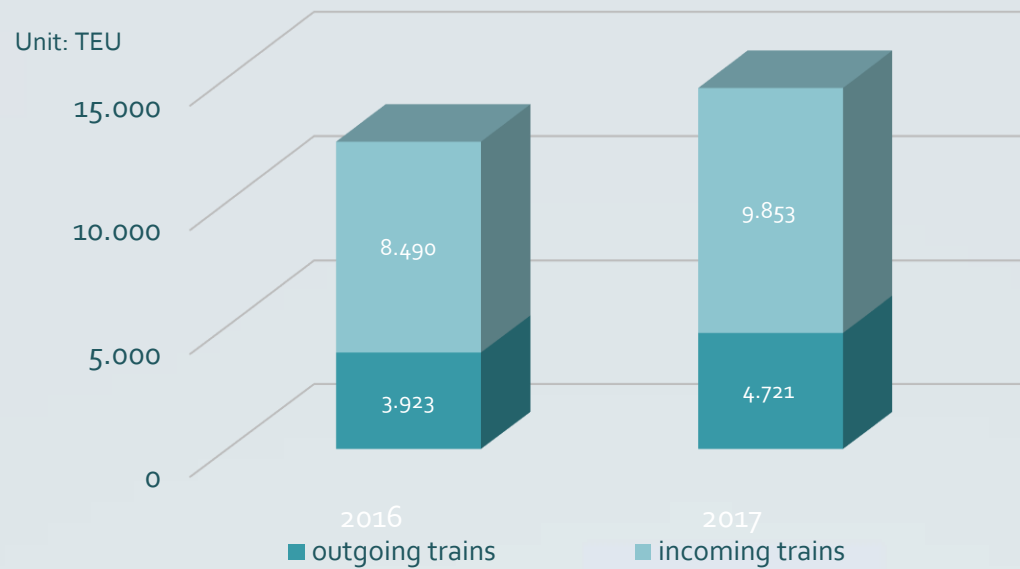
General cargo by subgroups, 2017







Incoming and outgoing cargo trains



	2016	2017	%
Port of Setúbal Train traffic (TEU)	12.413	14.574	17%

LISNAVE

- Maintenance and repair of ships
- The largest shipyard in Portugal and one of the largest in Europe
- 6 dry docks
- 100 ships / year of several types



- Fishing “The Best Fish in the World”
- Aquiculture



Leisure Navigation



1. The Port of Setúbal today

2. Development strategy

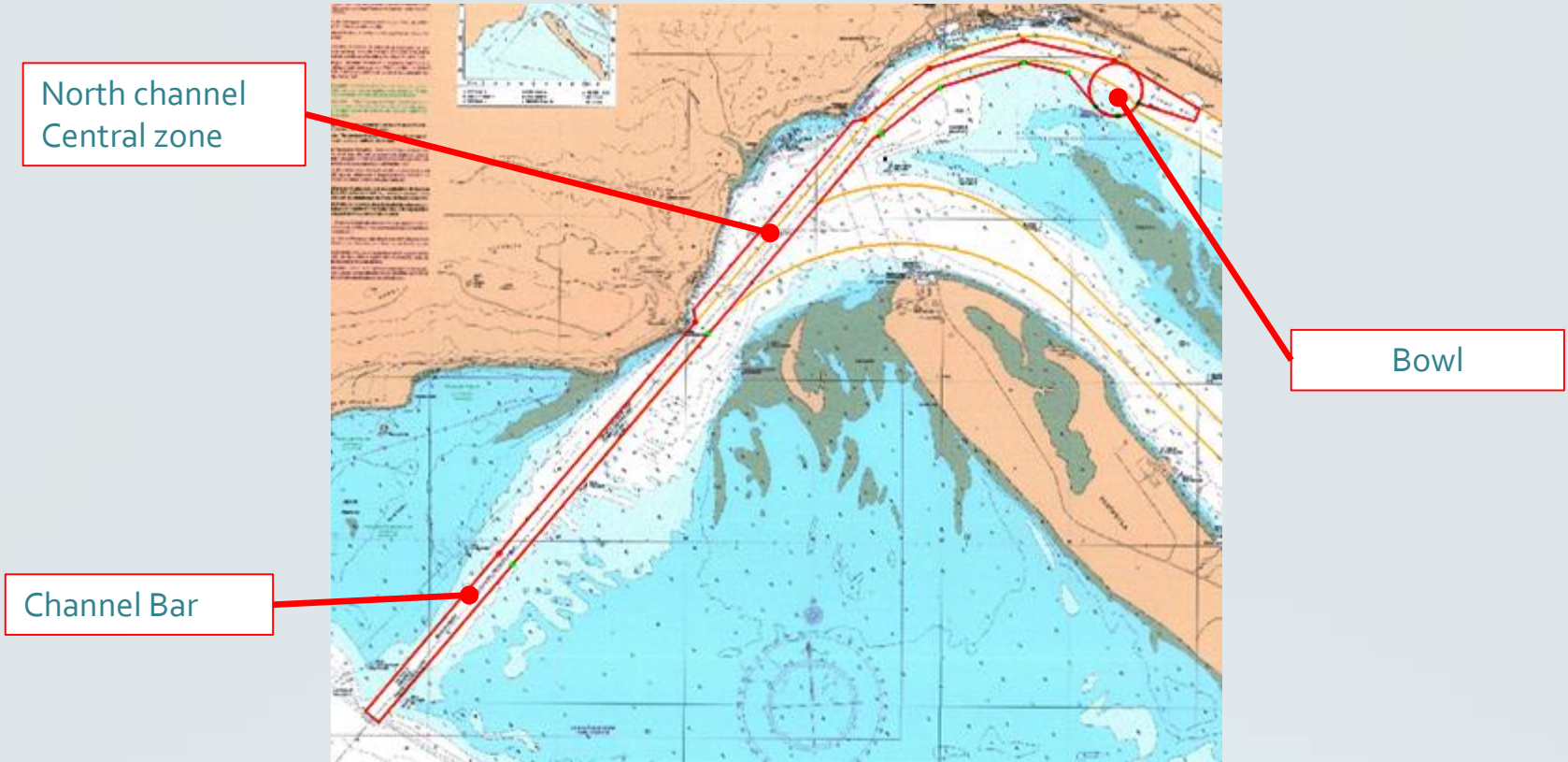
3. Main Investments

The port strategy is based on three main objectives:

- a) Improvement of the Port of Setúbal maritime access;
- b) Improvement of the Port of Setúbal rail access;
- c) Modernization of information systems (JUP III / JUL-Single Logistics Window) and the technological level of the VTS Center;
- d) Reinforcement of safety and environmental protection, including the social and sustainability responsibilities of local communities.

1. The Port of Setúbal today
2. Development strategy
- 3. Main Investments**

Projeto: Maritime Access Improvement



Dredging of the navigation channel **1st phase**

Objective: Receiving container ships from 3.000 to 4.000 TEUs

Budget Forecast: 25 million €

	Entrance channel	Central zone	North channel
Dredging (ZH meters)	-15,0	-15,0	-13,5
Dredging volume (Million m ³)	1,7	0,2	1,6
Deposition (Million m ³): 1,8 (new terminal embankment area) and 1,7 (delta base)			

Total dredging volume : 3,5 Million m³

Project: Rail Access Improvement

GOALS:

- Increase the capacity to receive / dispatch the trains in the Port of Setúbal central zone;
- Improve rail access to the central port area by reducing the constraints on the interface between land and sea modes.
- Improve the performance and competitiveness of the port and its associated companies, benefiting the export and import industries of the hinterland.
- Respond to the traffic demands of the port and the industrial area.
- Improve the layout of the current railway infrastructure, either through rectification of existing lines or through the construction of new lines.

Project included in “Estratégia para o Aumento da Competitividade da Rede de Portos Comerciais do Continente - Horizonte 2026”, Resolução do Conselho de Ministros n.º 175/2017, 24 Novembro



Project: Reorganization of terminals accesses and entrance building

PORTO DE
SETÚBAL



GOALS:

- Improvement of road access to the terminals TM2 and Terminal Ro-Ro, expansion of parking areas and construction of a new entrance building;
- Functional and operational improvement of existing infrastructures.



Budget Forecast: 1,8 million €

Developer and investor: APSS

Project: Modernization of the VTS System

GOALS:

- Improve navigation safety and efficiency by modernizing VTS equipment;
- Promote the automated exchange of data between JUPII and SIG interfaces;
- Improve coordination with the National Competent Authority for Maritime Traffic Control (DGRM) and with the SafeSeaNet, the community system of maritime information exchange
- Optimize preventive and corrective maintenance actions required to ensure standard operational availability.
- Ensure the operational availability that is required for the provision of port-related maritime traffic control service

Budget forecast:

650 thousand € (hardware and software)

Developer and investor: APSS



GOALS:

- Modernization of the port and simplification of procedures;
- Harmonization of port information systems and optimization of existing systems;
- Expansion of IT services according to the needs of the demand (24 hours a day, 7 days a week).

Budget forecast: 5,1 million € (85% Fundo de Coesão)

Developer and investor: APP



Port of Setúbal: The shortsea solution of the Lisbon Region.



- ESI Incentive Provider ; Green Award Port;
- ECOPORT
- Sistema de Gestão da Qualidade, Ambiente e Segurança (ISO9001, ISO14001 e OHSAS18001)
- One of the Most Beautiful World Bays Club

